



507H008361 KINGS-RANSOM T DOMINGO-ET \*TR \*TV \*TL \*TY \*TD

USA 00061488588

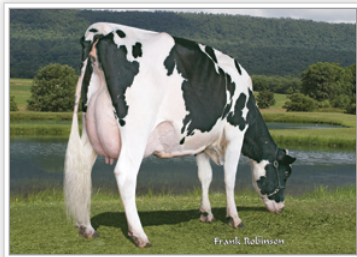
TEAMSTER X MTOTO X COMMOTION  
100% Registered Holstein Ancestry



# DOMINGO



Dominion Domingo Tamara

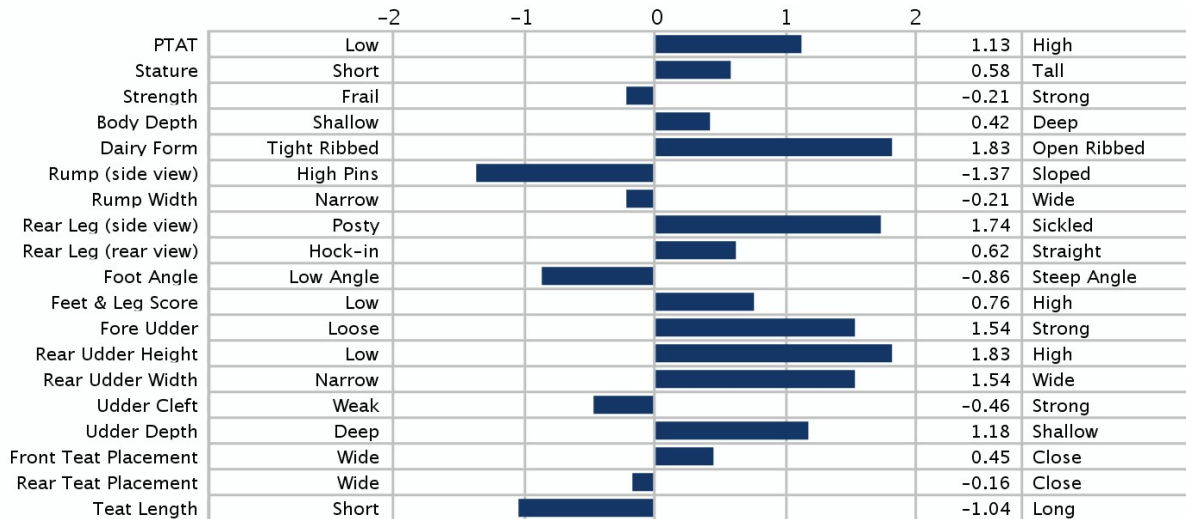


Plez-Vu Domingo 3234



Plez-Vu Domingo 3234

Production		Type	Management Traits	
TPI	1964	PTA Type	1.13	SCE / Re1.% 6/96
NM\$	602	Udder Composite	1.04	DCE / Re1.% 5/75
PTA Milk (lbs)	1032	Feet & Leg Composite	0.16	SSB / Re1.% 6.1/82
PTA Protein (lbs)	27	Body Composite	0.28	DSB / Re1.% 3.8/65
PTA Protein (%)	-0.01	Dairy Composite	1.11	SCS 2.61
PTA Fat (lbs)	53	Type Reliability %	88	Productive Life 4.7
PTA Fat (%)	0.06	Dtrs / Herds	61/46	DPR / Re1.% 1/78
Production Reliability %	92	aAa	312456	SCR / Re1 % 0.9/97
Dtrs / Herds	82/59			Milking Speed 3
				Disposition 3



Information for August 2011, provided by the following:  
Production: USDA-Genomic, Type: USDA/HA Genomic  
Service Sire Calving Ease: USA, Daughter Calving Ease: USA